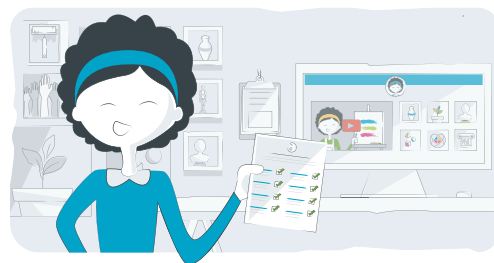


# Application Components

The application is designed to showcase your personality, professional competency, and academic credentials. The required components are outlined below.



## Log In or Create an AOEU Account

An AOEU online account is required for application to the program. Confirm your account information and provide a social security number.

## Record a Video of Intent

Record a 1-3 minute video of intent and upload it as a .mov or .mp4.

## Have Your Official Transcripts Sent

Your transcript(s) must confirm a bachelor's degree or higher. Transcripts must be sent directly from the issuing institution.

## Compose a Writing Sample

Compose a 1-2 page essay which demonstrates graduate-level writing with APA formatting and citations and upload it as a PDF.

## Confirm or Demonstrate English Language Proficiency

Click "Yes, I am a native English speaker," or upload a copy of your English Language Proficiency exam results.

## Curate Your Micro Portfolio

Upload 10 images and descriptions which showcase your work as an artist and/or educator.

## Upload a Current Resume or CV

Update your resume or CV to include recent and relevant work experience, distinctions and honors and upload it as a PDF.

## Submit Your Application

Review your application and submit the \$100 application fee.

For questions or support, contact: [admissions@theartofeducation.edu](mailto:admissions@theartofeducation.edu) or 515.236.5050.